

VER-4430 XL Sensor (IR)

(designed to be used in combination with VER-1782 XL Personnel Alert Badge)

The eXtended Life (XL) Sensor (VER-4430) serves the same location sensing function as the VER-4422 and VER-4426 IR sensors, but with the additional benefit of processing the new XL Badge IR packets, yielding a significantly longer lifespan for the badge battery. It contains an integrated microprocessor that automatically sends a supervisory identification packet to the collector every two minutes for 100% network monitoring functionality. The XL Sensor also pre-processes the XL badge IR packets before they are sent to the collector.

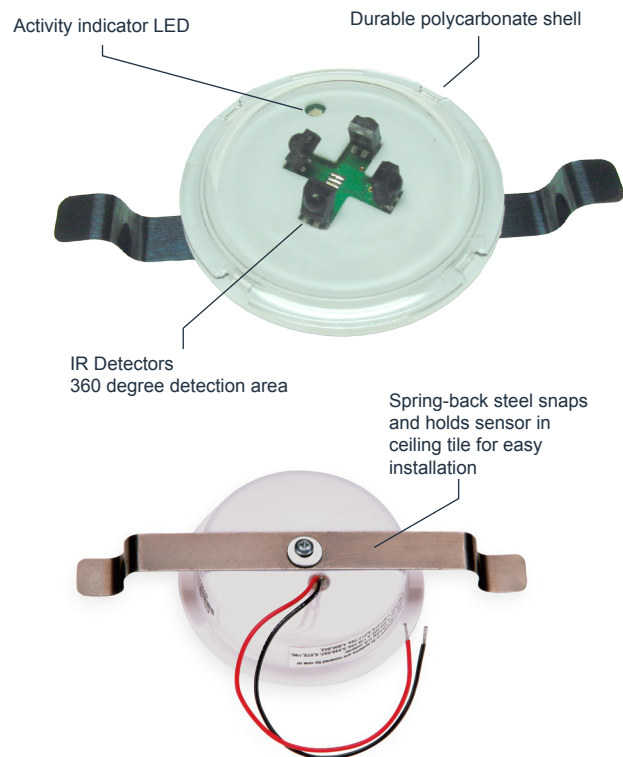
The VER-4430 is completely backwards compatible with existing Versus IR sensor installations, behaving as a supervisory sensor with a set 'badge ID' code. This allows continuous monitoring of the sensory network even in areas with little or no IR badge traffic for prolonged periods of time.

For more information on the interaction of the hardware network components, please see the Versus Sensory Network Diagram.

Compatibility notes:

1. The VER-4430 XL IR and the VER-4432 XL sensors are fully backwards compatible with all previous versions of Versus Hi-Frequency sensory network and badge / tag products and may be used to replace or expand pre-existing networks.
2. Extended battery life XL badges and tags require either the long range VER-4430 XL IR or the VER-4432 XL Patient Room Sensor for proper operation.

For more information on of the sensory network design, please refer to the Versus Sensory Network Diagram.



Features

- Microprocessor simulates known supervisory packets/processes XL Badge transmissions
- Non-polarized UTP connection for easy wiring
- High frequency infrared modulation provides compatibility with high frequency fluorescent lighting
- Simple mechanical installation (drill a 2-3/8" hole, wire and snap into place)
- Inconspicuous white housing blends into ceiling tile
- Green diagnostic LED flashes when receiving IR signals or stays lit when flooded with natural IR light. It also distinguishes the XL Sensor from the non-XL IR Sensor (VER-4422/4426/4442) which has a red LED flash

Ships with:

- Attached spring-steel clip for easy installation

Required - Sold Separately:

- Collector Checker (included with Transaction Engine VER-8000)
- VER-8310 Audio Visual Service for alert functionality

Installation:

- Install Sensors in acoustic tile (using the spring steel clip) or a standard electrical junction box, where required by local building codes.

Maximum Run Length:

- The maximum run length to Collectors from any Sensor is 1000'.

Technical Specifications

Size:	2-3/4" x 1"
Weight:	1.2 oz
Housing:	Polycarbonate
Reception Angle:	360 degrees On-Axis Reception
Coverage Radius:	16 feet min.
IR Wavelength:	875 nanometers
IR Reception Freq.:	447.5 KHz
Idle Voltage:	17.5 VDC
Power:	255 mW
Wiring:	24 AWG twisted-pair
Horizontal Coverage:	360 degrees
Vertical Coverage:	180 degrees
Run Distance:	Maximum run length ≤1000'
Operating Environment:	14 - 122 degrees F, (-10 - 50 degrees C), 0-95% RH, noncondensing
Storage Environment:	0 - 140 degrees F, (-18 - 60 degrees C), 0-95% RH, noncondensing

FCC STATEMENT:

This component complies with part 15 of the FCC Rules. Operation is subject to the following two conditions: 1) This device may not cause harmful interference, and 2) this device must accept any interference received, including interference that may cause undesired operation. Modifying or tampering with the transceiver's or receiver's internal components can cause a malfunction, invalidate the warranty, and will void your FCC authorization to use these products.

